

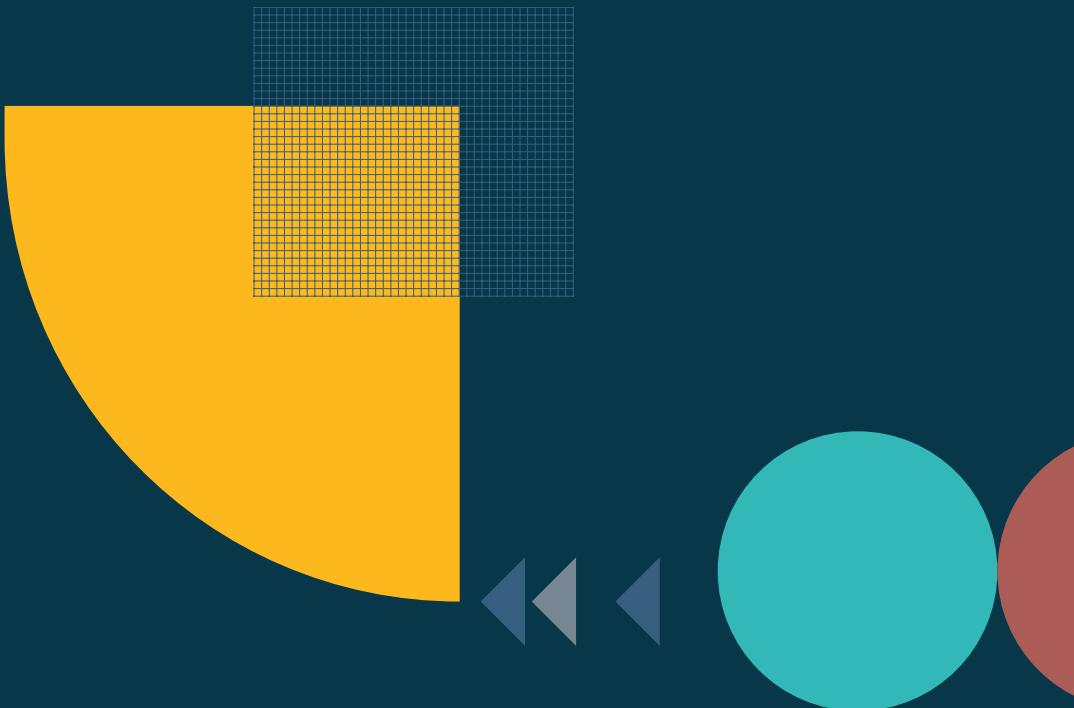


Cal**SC**HLS

The California School Climate, Health, and Learning Surveys

Creating safe and supportive environments
for student success with the largest and
most comprehensive statewide survey
system in the nation.

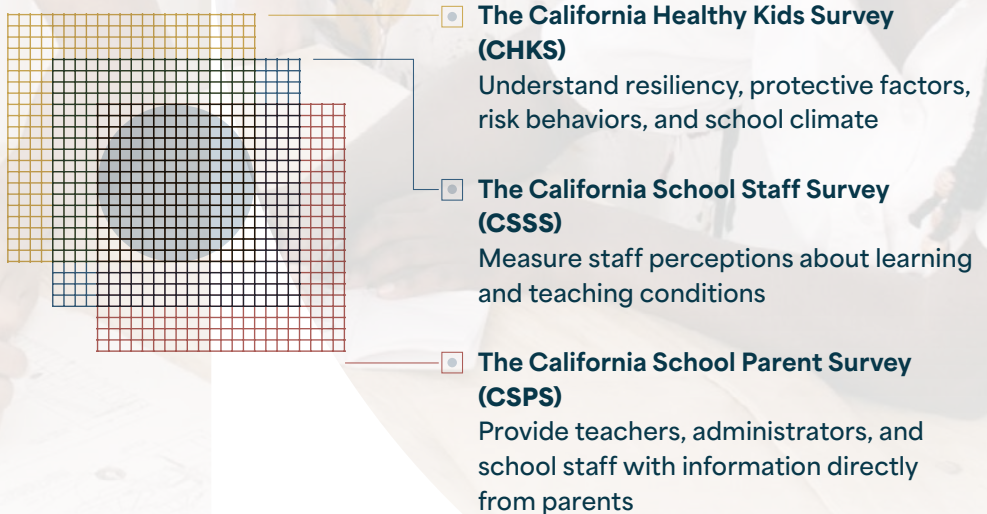
- » Alignment with district and state priorities
- » Quick turnaround of survey results
- » Data dashboards to examine trends and disparities
- » Rigorous validation of data quality
- » Full-service technical assistance
- » Flexibility and customization
- » Affordability



What is CalSCHLS?

CalSCHLS is a survey system offered by the California Department of Education (CDE) to provide quality local data to districts, schools, and communities on school climate and safety; learning supports and barriers; and youth development, health, and wellness.

Designed as a flexible system that delivers data mapped to individual needs, CalSCHLS can be customized to explore local concerns and interests.



All surveys are developed by the California Department of Education (CDE) and WestEd.

What Does CalSCHLS Measure?

The CDE surveys assess perceptions of students, staff, and parents/guardians about school climate, student well-being, and the learning environment in California public schools.

What Sets Us Apart?

Since 1997, the California Department of Education (CDE) has provided access to CDE survey data to districts across the state.

A Unique Data System

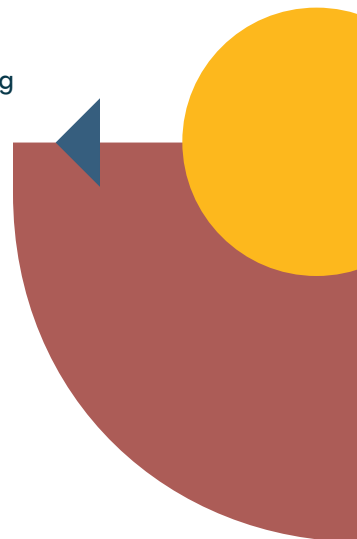
- **Routine and rigorous data validation** for reliability and accuracy
- **Up to two decades of historical data** so users can compare progress with various benchmarks, set targeted goals, and monitor trends over time
- **Choice of data delivery format and levels**, including local, county, and state

Tools and Resources to Help Identify Areas for Improvement

- Anonymous and customizable surveys to obtain critical data on sensitive topics, such as suicide ideation or alcohol, tobacco, and other drug use
- Public and private dashboards with the capability of respondent disaggregation to support users in identifying and supporting students in need
- Knowledgeable technical advisors providing tailored supports to participating school districts and counties

“

One priority of CalSCHLS is assessing the caring relationships between and among staff and students, a well-recognized factor in fostering effective, healthy, and sustainable learning. The survey results help districts design inclusive systems and spaces that promote connection for all students, staff, teachers, and parents.



How Can CalSCHLS Support Districts and Counties?

CalSCHLS enables educators to build safe and supportive learning environments and to tailor school improvements to the needs of their communities through reliable data collection and analysis.

In helping uncover comprehensive, customizable, high-quality data on a variety of indicators critical to positive student outcomes, the CalSCHLS surveys enable education leaders to tailor school improvements to the needs of their communities and channel resources where they matter most.

The Technical Assistance Team provides one-on-one support for collecting, interpreting, and acting upon survey data. The team consists of two regional technical advisors, two statewide technical advisors, and a director of technical assistance.

Supports include:

- **Data Collection:** survey registration, customization, administration and report selection
- **Data Analysis:** reports and data dashboards, which provide summaries of key indicators, data scales, data trends over time, and data disaggregated by student groups identified in the California Education Code
- **Data Workshops:** For a nominal fee, in-person, interactive workshops on why the data is important, what the data measures, and how the data can shift practice are available at the county, district, and school levels. Virtual data review consultations are available to counties and districts at no charge.

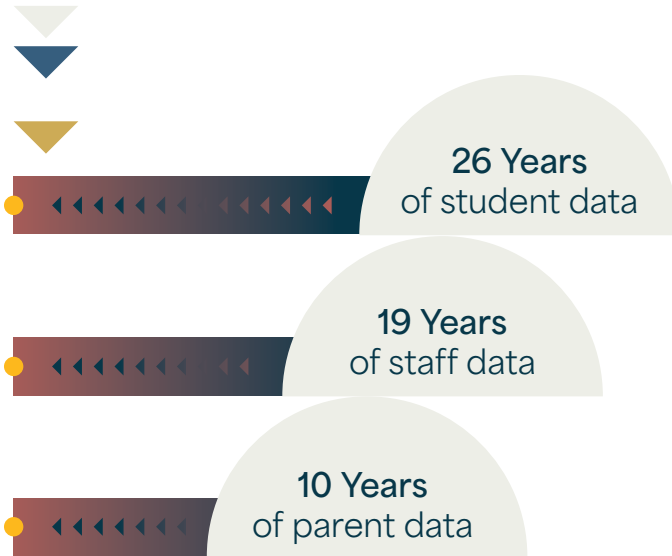
CalSCHLS surveys also support reporting and monitoring compliance with accountability and/or grant requirements, such as

- *Local Control Accountability Plans—Priority 6 (School Climate)*
- *Tobacco-Use Prevention Education (TUPE) program grants*
- *Drug-Free Communities (DFC) grants*
- *Comprehensive School Safety Plan (CSSP) and School Plan for Student Achievement (SPSA) state requirements*
- *Suicide prevention, intervention, and post-intervention policy and Mental Health Education requirements*
- *Anti-bullying, including cyberbullying, policy requirements*

What is CalSCHLS' Reach?

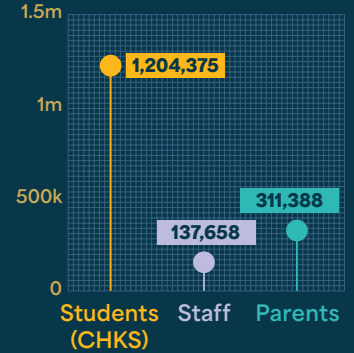
With almost 700 active California school districts using the surveys, the team is quickly building a robust picture of the California school landscape to better support the community and government partners in creating critical initiatives tailored to the needs of California students.

Additionally, the CalSCHLS staff and student surveys have been widely used in research studies both nationally and internationally to guide the work of education, prevention, and health projects in school, after-school, and community settings.

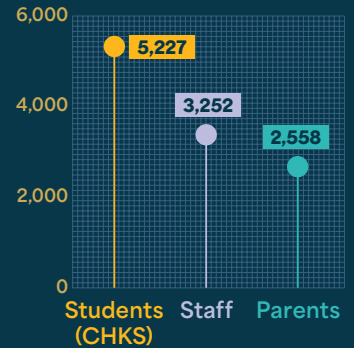


Summary of Survey Administration 2020/21-2021/22

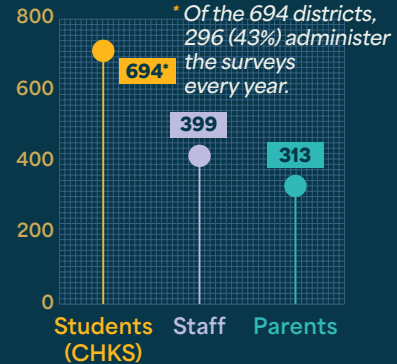
Respondents



Schools



Districts



Note. Survey counts are based on data received by 7/31/2022.

How Can CalSCHLS Support After Data Collection Ends?

Data Reports

- Standard district, staff, parent, and student reports
- School- and district-level School Climate Report Cards and Mental Health Reports

Data Dashboards

- Free access to the CalSCHLS Public Data Dashboard displaying recent state, county, and district CHKS results, trends over time, and disparities in survey outcomes by groups
- Paid access to a 2-year subscription to a private, password-protected district dashboard displaying up to nine years of data at the district and individual school levels

Data Workshops

- Access to hands-on trainings, coaching, and customized workshops to identify steps for programmatic improvements in the school community
- Opportunities to leverage workshop insights to support data dissemination and use

Contact Information

Visit calschls.org,
email calschls@WestEd.org,
or call 562.799.5164 for
more information.

Photos by Allison Shelley for EDUimages

The CalSCHLS system was created by the California Department of Education (CDE) in 1997 to provide school districts and their partner communities with efficient, cost-effective, and quality local data that can be used to improve student academic performance and the social-emotional, behavioral, and physical health of all youth. The majority of districts in California now use CalSCHLS data for Local Control and Accountability Plan (LCAP), School Climate (Priority 6) indicators.

CalSCHLS

calschls.org



WestEd 
WestEd.org